



# ACA's Meal Management Software

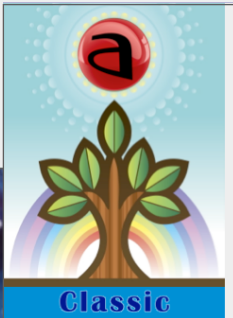
## No.1 SINCE 1994



### Introducing Two Versions: *Premium & Classic*



**Antares**  
Food Services



**Antares**  
Food Services

*For services with max of 30 active clients*

We are introducing two versions of Antares Food Services: Antares Food Services *Classic*, and Antares Food Services *Premium*.

Now all service providers can access the same quality software and be able to offer the same quality of service to their clients, regardless of service location and size.

**Now there is no reason for any service in Australia to not use Antares Food Services.**

### Features

- Configurations For All Food Services
- Extensive Menu Choices
- Meal Rostering
- Runs & Delivery Management
- Volunteers Rostering Management
- Comprehensive Accounting & Payment System
- Documentation & Help System
- Support & Training and 60+ more features

### Options

- MYOB Interface
- Menu Choice
- Meal Item Types
- Multiple Menus
- Run Set Up
- Delivery of the Day and more...

### Antares Benefits

You need only to measure, and convert to dollars, the time that it takes staff to do their work manually every day including preparing reports (even using spreadsheets), the work that Antares Food Services does for you.

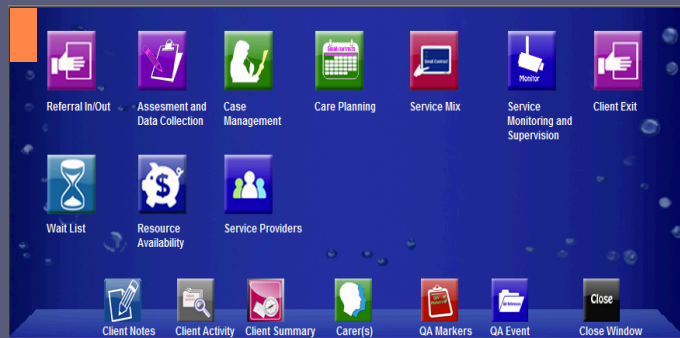
Add to your calculation the cost of time spent double checking, correcting human errors and the cost of the time spent organizing and filling and searching documents manually.

### Process as a Service

PaaS provides greater fairness for the usage of the program. Why? Because PaaS is based on the number of connections (i.e. size of the organisation) required to provide its services. As an example, an organisation with 2 concurrent process connections to the database will pay more than a smaller organisation that needs only one connection. These organisations can have the system for as little as \$700.

### Multi-service Organisations

*Antares Service Manager* is a new product from SpectrumLab that seamlessly connects all services together in a multi-service outlet, allowing each service to operate independently, while at the same time provide options to manage them as one integrated agency.



### Support

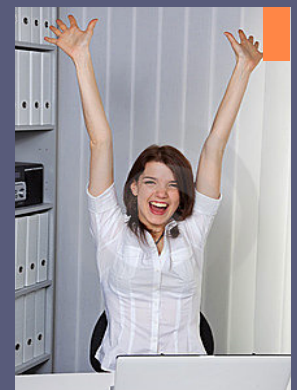
- Web Support
- Phone Support
- Forum
- Software updates
- Downloads

### Training

- Two (2) days training tailored to your needs
- Workshops for existing users
- Refresher courses for existing users

### Procedure Manuals for Antares

We have a range of "off-the-shelf" procedure documents available for purchase in MS Word format



**Contact us to discuss the implementation of Antares Food Services in your organisation, or to find out about the quality integration of all your other services within Antares.**



(02) 8011 3400



support@acalink.net



www.acalink.net



splab.support